



MHR Curb Construction Procedures

Wednesday, September 14, the Village of Evergreen Park will undergo a construction project to replace all curbs around Most Holy Redeemer Church and School. Construction will be done in three phases, and last from September 14 - 28. Please note these dates are in place, weather permitting. Phase one will impact the 9500 block of S. Millard Ave. along with 96th st. east ½ north side. Phase two will impact the 9500 block of S. Lawndale Ave. along with 96th st. west ½ North. Phase three will impact the south side of 96th st. This process will impact our daily operations, drastically, particularly our morning and afternoon arrival and dismissal protocol. To ensure students arrive and depart safely from school, we will follow the following amended procedures.

Immediate Entrance into the Building

If possible, all students/families are encouraged to walk to school during construction.

Throughout construction, **all students will enter the building immediately upon arrival** through the designated doors outlined below. Students will be guided to their classrooms, where they will meet their teachers to prepare for the day. The window for students to enter the school building will be 7:50 am - 8:10 am. We ask that parents walking their student(s) to school refrain from gathering on site once students enter the building so to alleviate congestion at our drop-off locations.

Walking to School During Phase One - Millard Ave. Construction - September 14, 15, 16

Pre-School through fourth-grade students walking to school will enter the building through entrance 1W between the church and school. 5th through 8th grade students walking to school will enter the building through entrance 3W next to Briody Hall. Pedestrians will be unobstructed on Lawndale and may walk through the grassy area north of the rectory. Pedestrians may also proceed through the parkway between the school and church to both entrances. Students will be met at the outlined entrances by school personnel and guided to their classrooms.

Driving to School During Phase One - Millard Ave. Construction - September 14, 15, 16

Throughout construction, vehicle and pedestrian entrance to the north parking lot on Millard is prohibited. ALL vehicles dropping students off are to follow the procedures outlined below:

1. All incoming traffic to MHR must proceed northbound onto Lawndale via 96th st.

2. All traffic must turn East into the North parking lot. (Please note there will be cars entering and exiting this entrance, so please proceed carefully and listen to authorized personnel on site).
3. All traffic must proceed between the cones as they proceed through the drop-off line.
4. Once at the designated drop-off location in front of our North Entrance, students are to exit the car and proceed to the North entrance to be met by school personnel and guided to their classroom.
5. All traffic must proceed between the cones and exit the North parking lot by turning North onto Lawndale Ave and proceeding to 95th st.

Dismissal During Phase One - Millard Ave. Construction - September 14, 15, 16

All students walking home will be dismissed at 2:45 pm. Pre-School through 4th grade students walking home will exit the building through entrance 1W and proceed south to 96th street. Students in 5th through 8th-grade walking home will exit the building through entrance 3W between the school and convent and proceed south to 96th st. All students picked up via vehicle will be dismissed at the North parking lot entrance (porch doors) at 2:50 pm. We ask all parents picking up students to arrive no later than 2:40 pm and park in the north lot using the same procedures as during drop off. At 2:50 pm, students will be dismissed into the parking lot. We ask parents to meet their child at their car and secure their child into the car. Once all students are safely in cars, each row of cars will be directed to exit the parking lot via the Lawndale Ave. exit by an MHR/EPPD representative and proceed northbound to 95th st.

Walking to School During Phase Two - Lawndale Ave. Construction - September 19, 20, 21, 22, 23

All 5th to 8th-grade students will enter through Briody Hall's main entrance on 96th street. Since construction will impact the west side of 96th street, all 5th-8th Grade students and parents should cross 96th street at Millard Ave. and proceed to enter Briody Hall. Pre-School through fourth-grade students will enter the building through our entrance on Millard (Red Awning doors). Students will be met at the outlined entrances by school personnel and guided to their classrooms.

Driving to School During Phase Two - Lawndale Ave. Construction - September 19, 20, 21, 22, 23

Throughout construction, vehicle and pedestrian entrance to the north parking lot on Lawndale is prohibited. ALL vehicles dropping students off are to follow the procedures outlined below:

1. Traffic can access Millard Ave via 95th st. or 96th st.
2. All traffic must turn Westbound into the North parking lot. (Please note there will be cars entering and exiting this entrance, so please proceed carefully and listen to authorized personnel on site).
3. All traffic must drive between the cones as they proceed in a loop throughout the parking lot.
4. Once at the designated drop off location in front of our North Entrance, students are to exit the car and proceed to the North entrance to be met by school personnel and guided to their classroom.

5. All exiting traffic must turn Southbound out of our North parking lot and proceed south down Millard Ave.

Dismissal During Phase Two - Lawndale Ave. Construction - September 19, 20, 21, 22, 23

All students walking home will be dismissed at 2:45 pm. Pre-School through 4th grade students walking home will exit the building through entrance 1E on Millard Ave. 5th through 8th-grade students walking home will exit the building through Briody Hall onto 96th street, entrance 1S and proceed to cross 96th street at Millard Ave. All students picked up via vehicle will be dismissed at the North parking lot entrance 1N (porch doors) at 2:50 pm. We ask all parent picking up students to arrive no later than 2:40 pm and park in the north lot using the same procedures as during drop off. At 2:50 pm, students will be dismissed into the parking lot. We ask parents to meet their child at their car and secure their child into the car. Once all students are safely in cars, each row of cars will be directed to exit the parking lot via the Millard exit by an MHR/EPPD representative and proceed southbound via Millard.

Walking to School During Phase Three - 96th St. Construction - September 26, 27, 28

We return to normal arrival operations. We ask all students and families to avoid walking on the south side of 96th st. when approaching school. However, no vehicular traffic will be allowed on 96th st.

Driving to School During Phase Three - 96th St. Construction - September 26, 27, 28

We return to normal driving to school operations during this phase. However, no vehicular traffic will be allowed on 96th st.

Dismissal During Phase Three - 96th. St. Construction - September 26, 27, 28

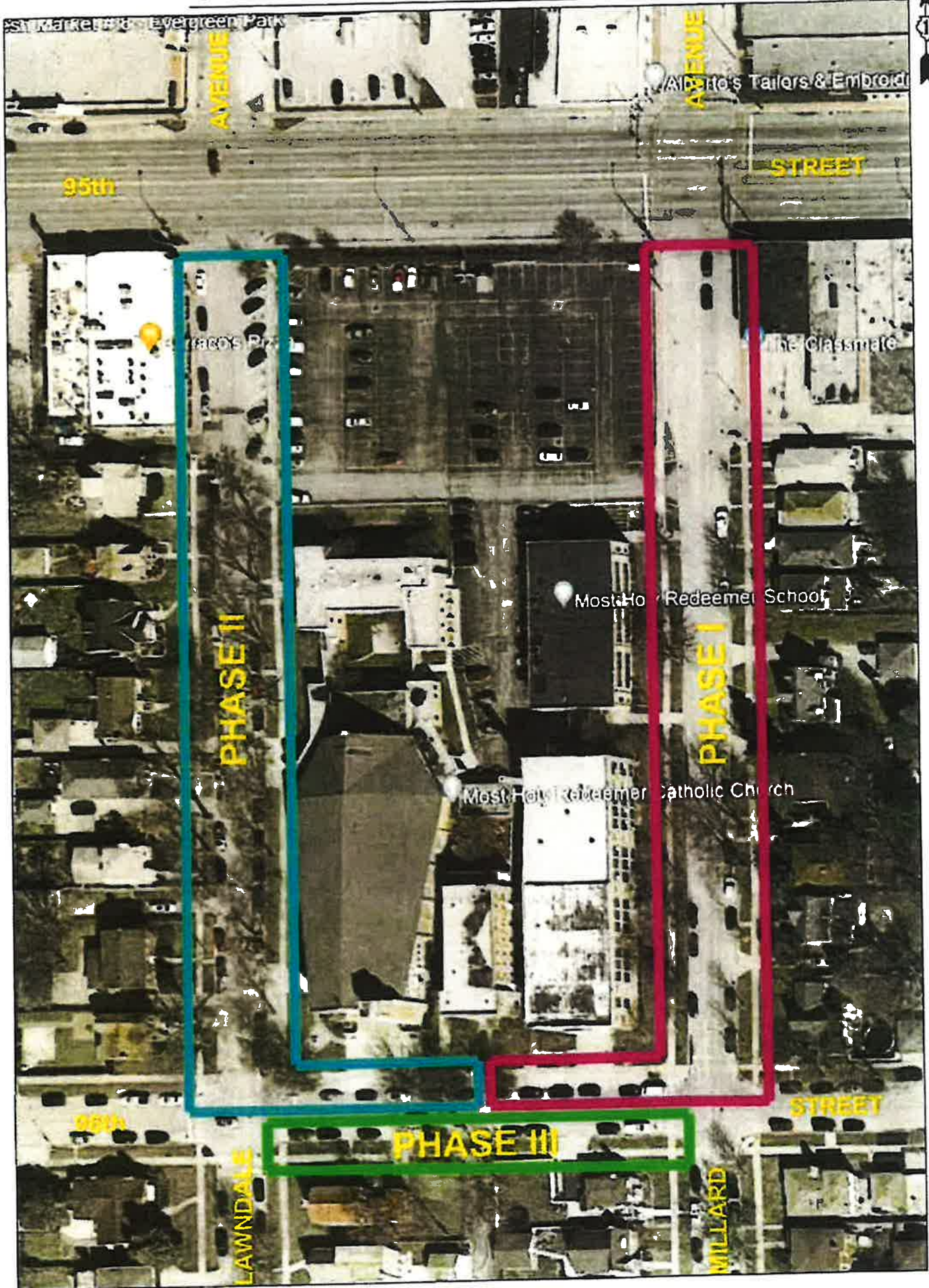
We return to normal dismissal operations during this phase. However, no vehicular traffic will be allowed on 96th st.

Please accept that these procedures are fluid and any updates to the plan will be communicated as made. We appreciate your partnership as we work through this project. We will continue to keep families updated in the days to come through various platforms. If you have questions, please contact the school.

Thank you, and Go Raiders!!

Mr. Dan Turney
Most Holy Redeemer Principal

CONSTRUCTION PHASING



95th

AVENUE

AVENUE

Alto's Tailors & Embroid

STREET

PHASE II

PHASE I

Most Holy Redeemer School

Most Holy Redeemer Catholic Church

96th

LAWNDALE

PHASE III

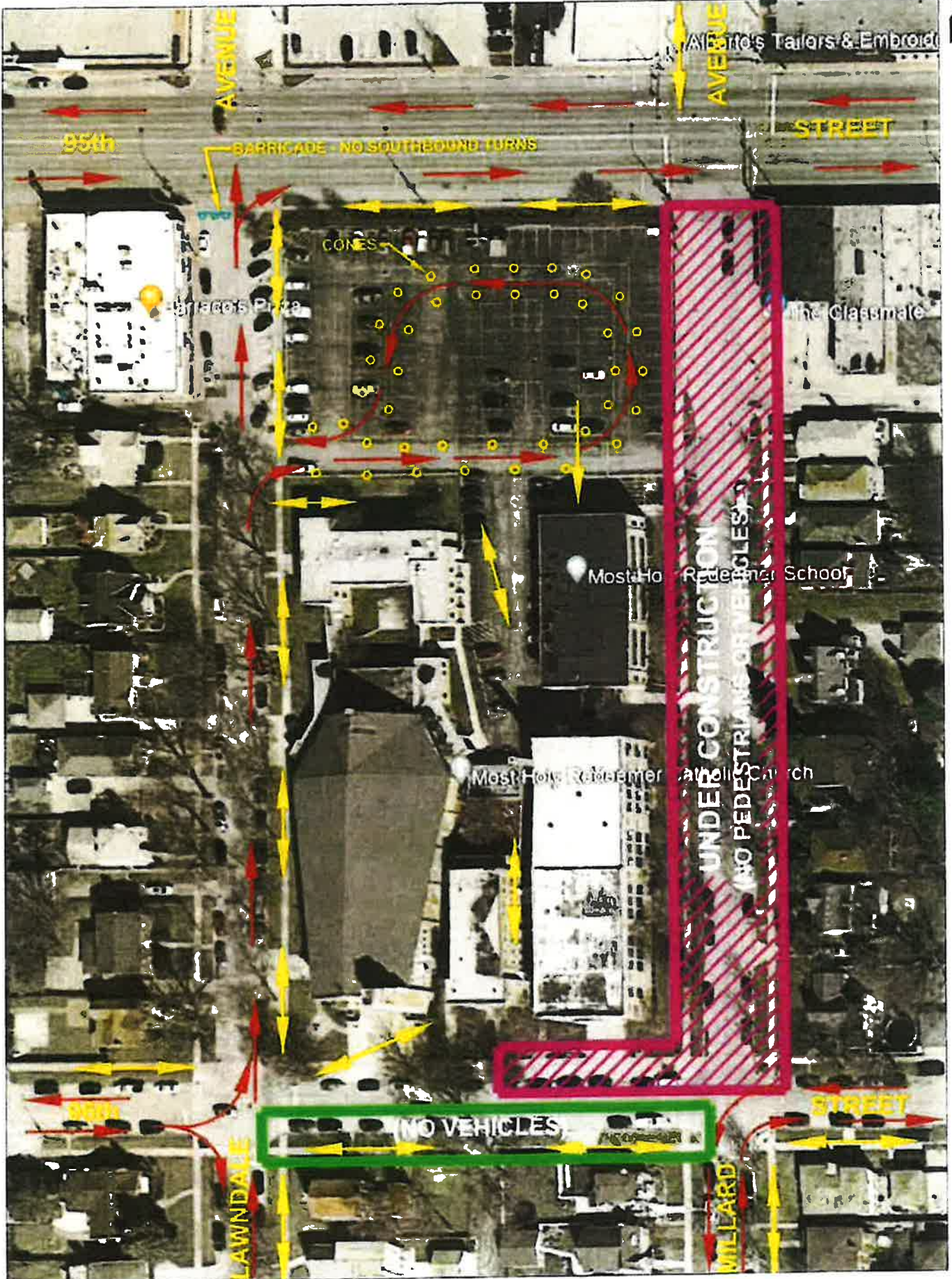
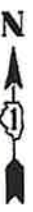
MILLARD

STREET

SEPTEMBER 14-16

PHASE I

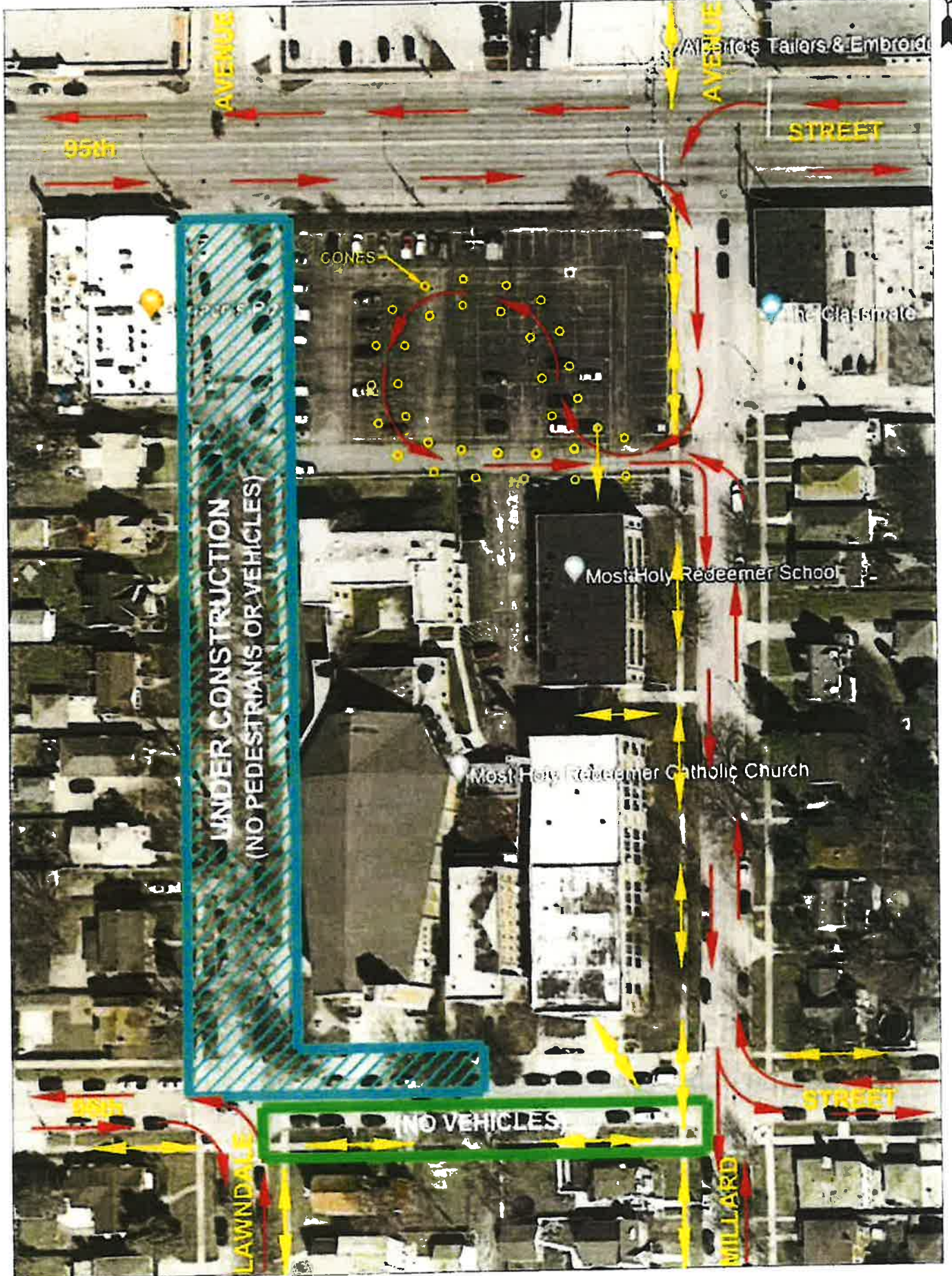
PEDESTRIAN ROUTE	
VEHICLE ROUTE	



SEPTEMBER 19-23

PHASE II

PEDESTRIAN ROUTE
VEHICLE ROUTE



UNDER CONSTRUCTION
(NO PEDESTRIANS OR VEHICLES)

NO VEHICLES

CONES

Albert's Tailors & Embroid

STREET

The Glasserie

Most Holy Redeemer School

Most Holy Redeemer Catholic Church

95th

AVENUE

AVENUE

95th

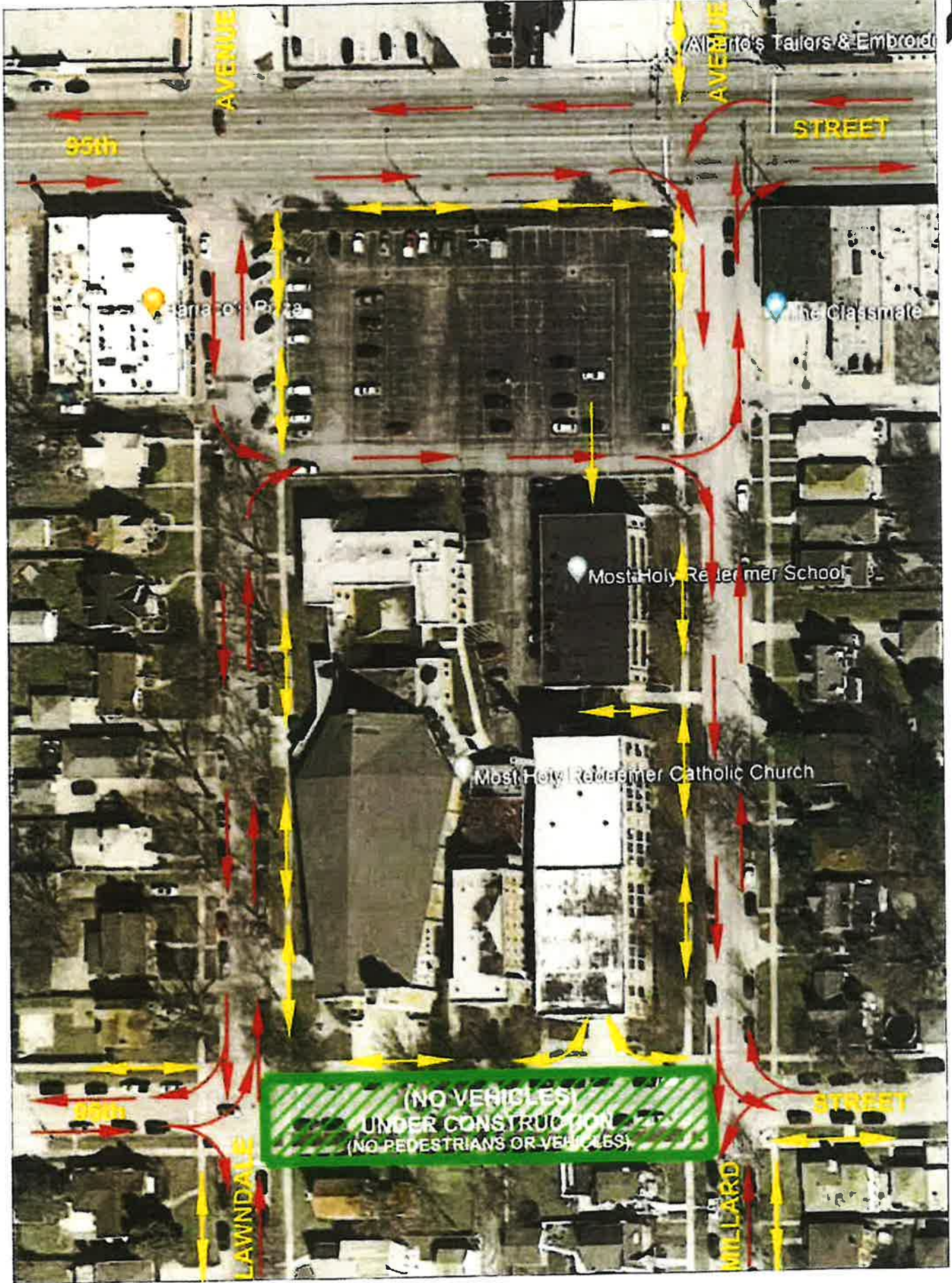
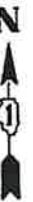
LAWDALE

MILLARD

STREET

SEPTEMBER 26-28 PHASE III

PEDESTRIAN ROUTE
VEHICLE ROUTE



(NO VEHICLES)
UNDER CONSTRUCTION
(NO PEDESTRIANS OR VEHICLES)

95th

AVENUE

AVENUE

STREET

Parade Plaza

The Classroom

Most Holy Redeemer School

Most Holy Redeemer Catholic Church

95th

LAWDALE

MILLARD

STREET